




# Climatic Bulletin

December 2013

 **Max  
temperature**

 **Min  
temperature**

 **Mean  
temperature**

 **Precipitation**

 **Sunshine  
duration**

December was cooler than normal values everywhere. Locally strong rainfalls and thunderstorms recorded at the very beginning and in the end. Frequently prevailed gale force (mainly Northern) winds caused significant damages.



ΕΘΝΙΚΗ  
**ΜΕΤΕΩΡΟΛΟΓΙΚΗ**  
ΥΠΗΡΕΣΙΑ  
HELLENIC NATIONAL METEOROLOGICAL SERVICE



# Temperature

## First Decameron

### Minimum:

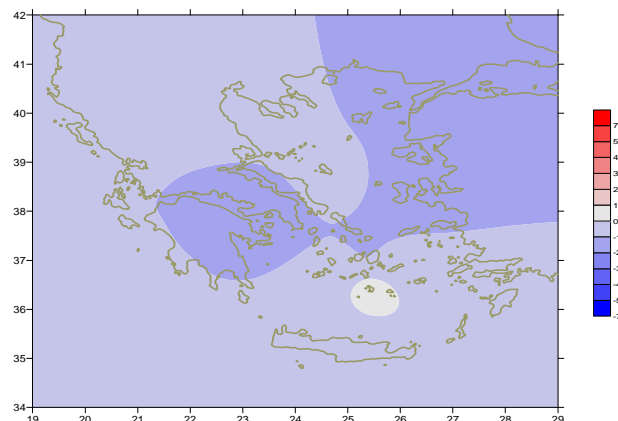
More specific :

-1.2°C in Florina (the lowest of month),  
-7.3°C in Kastoria, -5.3°C in Ioannina, -3.6°C in Larisa at 8/12.

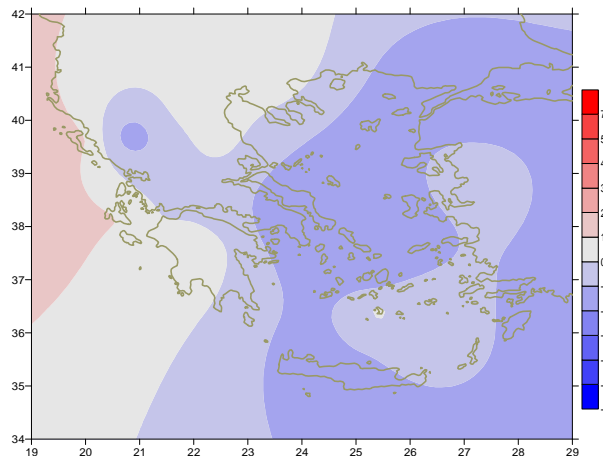
### Maximum:

More specific ( the highest):

24°C in Iraklion and 23.4°C in Kalamata at 1/12,  
23.6°C in Sitia at 2/12.



*Deviation of mean temperature from normal values*



## Second Decameron

### Minimum:

More specific :

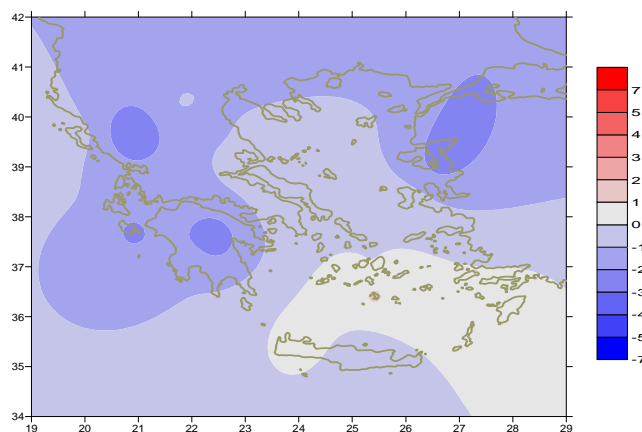
-9.4°C in Florina,  
-8.3°C in Ioannina, -6.4°C in Larisa at 20/12.

### Maximum:

More specific ( the highest):

17.8°C in Kerkyra at 13/12, 18.5°C in Kalamata at 15/12,  
17.6°C in Karpathos at 19/12.

*Deviation of maximum temperature from normal values*



## Third Decameron

### Minimum:

More specific :

-6.3°C in Tripoli at 22/12,  
-7.5°C in Kastoria at 23/12, -4.9°C in Serres at 24/12.

### Maximum:

More specific ( the highest):

19.6°C in Argos, 19.1°C in Leonidio,  
18.5°C in Methoni at 30/12.

*Deviation of minimum temperature from normal values*



## Precipitation

### First Decameron

Locally strong rainfalls and thunderstorms mainly over south parts from 1/12 to 4/12.

More specific:

*62mm in Astros, 31mm in Limnos at 2/12,  
33mm in Kalamata, 168mm in Souda at 3/2,  
46mm in Rodos, 32mm in Mikonos and 38mm in Kasteli at 4/12.*

### Second Decameron

Significant precipitation amounts locally over southern Aegean area and Creta.

More specific:

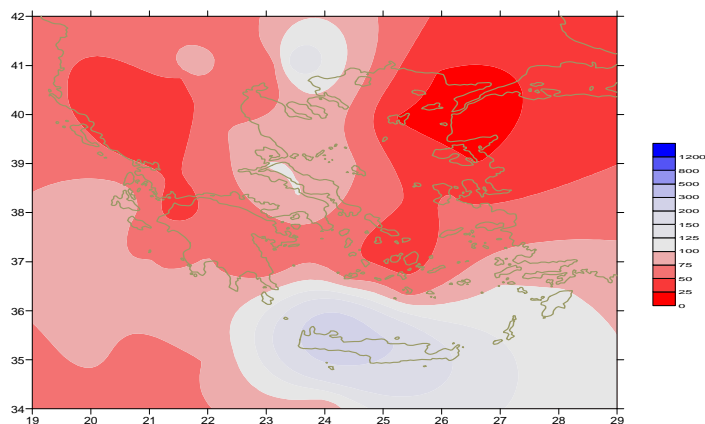
*51mm in Syros at 11/12,  
12mm in Souda and 71mm in Syros at 13/12,  
20mm in Spata, 17mm in Kos at 17/12.*

### Third Decameron

Locally strong rainfalls and thunderstorms.

More specific:

*37mm in Konitsa, 35mm in Kerkyra, 43mm in Ioannina ,  
48mm in Preveza, 39mm in Karystos, 35mm in Tripoli at 27/12,  
36mm in Chios and 53mm in Ikaria at 28/12.*



*Deviation of monthly precipitation  
height from normal values (%)*

TABLE OF MEAN VALUES

STATION	Longitude	Latitude	Tmean	TX	TN	RR	INST
SERRES	23,53	41,07	4,3	10,1	-0,6	59	130
FLORINA	21,40	40,78					
KASTORIA	21,27	40,45	2,9	8,7	-2,5	59	131
TRIKALA_IMATHIAS	22,55	40,60					
THESSALONIKI	22,97	40,52	6,4	11,2	1,5	28	149
CHRYSOUPOLI	24,62	40,92	6	10,6	1,7	48	147
ALEXANDROUPOLI	25,95	40,85	5,3	9,2	1,6	4	106
KOZANI	21,83	40,28	3,5	8,3	-0,7	28	
KERKYRA	19,92	39,62	10,8	16,6	6,1	78	142
IOANNINA	20,82	39,70	5,2	9,9	-1,3	11	121
PREVEZA	20,76	38,91	10,6	14,6	7,8	83	
TRIKALA_THESSALIAS	21,77	39,52					
LARISA	22,45	39,65	5,7	11,2	0,4	41	135
LIMNOS	25,23	39,92	8	11,1	5,3	15	111
ARTA	21,00	39,17					
AGHIALOS	22,78	39,21	7,6	12,2	4,1	55	134
MYTILINI	26,60	39,05	9,5	13	6,3	10	147
VELO	22,77	37,97					
AGRINIO	21,35	38,60					
LAMIA	22,43	38,87					
ANDRAVIDA	21,28	37,92	10	15,6	5,2	64	171
SKYROS	24,48	38,96	10,5	12,3	8,9	61	86
ARGOSTOLI	20,50	38,12	12,9	16,7	8,8	117	178
ARAXOS	21,42	38,15	10,4	15,2	6,3	53	179
TANAGRA	23,57	38,33	7,8	11,8	4,5	77	93
HIOS	26,13	38,35	9,7	13,1	6,8	58	120
PYRGOS	21,42	37,67					
TRIPOLI	22,40	37,52	5,4	11,4	0	81	131
TATOI	23,78	38,10	8,2	12,3	4,6	65	
HELLINIKO	23,73	37,90					
ELEYSINA	23,55	38,07	9,9	13,8	6,8	65	
ZAKYNTHOS	20,88	37,75	11,6	16,1	7,3	103	160
SAMOS	26,92	37,68					
ARGOS	22,75	37,63					
KALAMATA	22,02	37,07	10,6	17,1	6	112	162
NAXOS	25,37	37,10	12,6	14,1	10,9	27	93
METHONI	21,70	36,82					
MHLOS	24,43	36,73					
SPATA	23,95	37,95	9,6	13,1	5,1		
KOS	27,08	36,80	11,7	13,8	9,7	101	
KYTHIRA	22,98	36,15					
SANTORINI	25,41	36,41	13,3	15,2	11,3	48	124
SOUDA	24,12	35,55	12	14,7	9,8	267	96
RODOS	28,08	36,40	13	15,5	10,8	145	151
MYKONOS	25,35	37,43	11,1	13	9,8	69	
HERAKLEIO	25,18	35,33	13,2	15,7	10,1	134	82
IERAPETRA	25,73	35,02					
SITEIA	26,10	35,21					
RETHYMNO	24,50	35,36					
TYMPAKI	24,76	35,06					
KASTELI	25,33	35,18					
KARPATIOS	27,15	35,42	13,8	16,2	12,1	25	
PAROS	25,13	37,02					
SYROS	24,95	37,42	12,2	14,2	10	60	118
IKARIA	26,35	37,68					

TABLE OF DEVIATIONS  
FROM NORMAL VALUES

STATION	TMEAN ( deviation ) (I)	PRECI ( deviation % ) (II)
SERRES	-0.6	134
FLORINA		
THESSALONIKI	-0.3	53
ALEXANDROUPOLI	-1.7	5
KOZANI	-0.4	52
KERKYRA	-0.3	43
IOANNINA	-0.6	6
LARISA	-0.6	79
LIMNOS	-1.3	19
AGHIALOS		
MYTILINI	-1.8	7
AGRINIO		
SKYROS	0	78
ARGOSTOLI	0	94
ARAXOS	-1.1	40
HIOS	-1.4	51
HELLINIKO		
ZAKYNTHOS	-1.2	61
SAMOS		
KALAMATA	-1	73
NAXOS	-1.1	39
METHONI		
SANTORINI	0.5	61
SOUDA	-0.6	280
RODOS	-0.4	100
HERAKLIO	-0.6	174
SITIA		

(I) deviation of mean temperature from normal values  
(II) deviation of monthly precipitation height from normal values %.

# Climatic Bulletin

## General Description

Precipitation amounts were higher than normal values over most parts of southern Greece but quite lower over rest parts.  
The mean temperature varied lower than normal values everywhere.

### Climatic Parameters :

- ❖ **Normal Values** : normal values for various parameters (temperature, precipitation, etc) are defined as mean values calculated for 30 years. These normal values are used as basis and represent the mean situation. They can be specified in 10 daily, monthly, seasonally and yearly level and are used for the trend comparison of 10 days, month, season or year as: rainy decameron, mild winter, cool August etc.

### Measurement :

- ❖ **Precipitation**  
1 mm = 1 litre/m<sup>2</sup>

### Table Legend :

Tmean : Mean Temperature  
TN : Minimum Temperature  
TX : Maximum Temperature  
RR : Precipitation height(mm)  
INST : Sun Duration (hours)

### UTC hours (Universal Time Coordinates) in Greece :

- ❖ Winter : UTC hour = local hour - 2
- ❖ Summer : UTC hour = local hour - 3

© Hellenic National Meteorological Service  
Reproduction is prohibited without written authorization  
14 El.Venizelou 16777  
Helliniko, Athens  
Greece